



MARTHA W. JOLICOEUR
FARMS AND ESTATES · WELLINGTON, FL

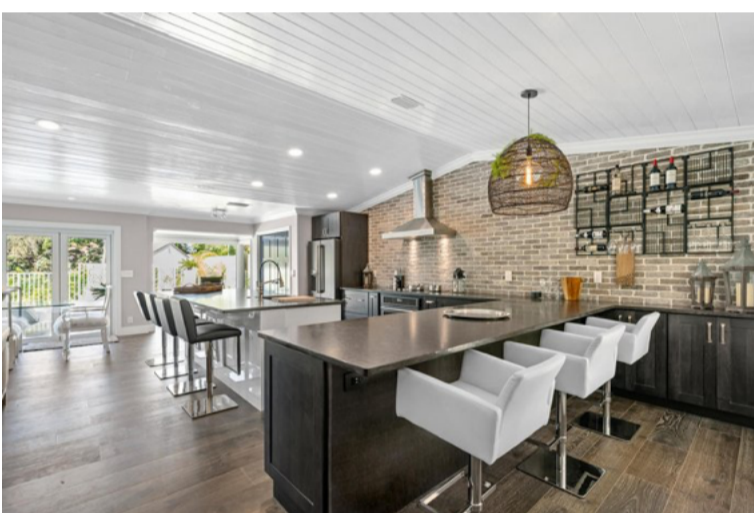
www.MarthasProperties.com

Douglas Elliman



Congratulations to the Buyers and Sellers of these two Palm Beach Polo & Country Club properties!

2272 Las Casitas Drive | Palm Beach Polo



Modern renovation in Palm Beach Polo & Country Club. This open-concept 3-bedroom, 2-bathroom villa is updated from top to bottom with wide-plank hardwood floors, an upgraded saltwater pool with Jacuzzi, and stunning white limestone deck. The gorgeous kitchen with exposed brick wall features top-of-the-line GE Café appliances, honed granite countertops, and a custom bar with wine cooler.

[Learn More](#)

12161 Glen Bay Drive | Palm Beach Polo



Updated 4-bedroom, 4-bathroom home in Palm Beach Polo & Country Club. Light and bright with high ceilings, impact glass windows and doors, an in-law suite, and office all within the Eagles Landing neighborhood. Spacious and neat with a gorgeous kitchen and private pool.

[Learn More](#)

[View Sale Properties](#)

[View Rental Properties](#)

[Palm Beach Polo Club](#)

[Contact Martha](#)

JUMP MEDIA
Raising The Bar In Equestrian PR



1111 LINCOLN RD, PH-805, MIAMI BEACH, FL 33139. 305.695.6300 © 2020 DOUGLAS ELLIMAN REAL ESTATE. ALL MATERIAL PRESENTED HEREIN IS INTENDED FOR INFORMATION PURPOSES ONLY. WHILE THIS INFORMATION IS BELIEVED TO BE CORRECT, IT IS REPRESENTED SUBJECT TO ERRORS, OMISSIONS, CHANGES OR WITHDRAWAL WITHOUT NOTICE. ALL PROPERTY INFORMATION, INCLUDING, BUT NOT LIMITED TO SQUARE FOOTAGE, ROOM COUNT, NUMBER OF BEDROOMS AND THE SCHOOL DISTRICT IN PROPERTY LISTINGS SHOULD BE VERIFIED BY YOUR OWN ATTORNEY, ARCHITECT OR ZONING EXPERT. IF YOUR PROPERTY IS CURRENTLY LISTED WITH ANOTHER REAL ESTATE BROKER, PLEASE DISREGARD THIS OFFER. IT IS NOT OUR INTENTION TO SOLICIT THE OFFERINGS OF OTHER REAL ESTATE BROKERS. WE COOPERATE WITH THEM FULLY. EQUAL HOUSING OPPORTUNITY.